

Cloncreen Wind Farm Project Newsletter

Summer 2020



Cloncreen Project Newsletter

Message from Cloncreen Wind Farm Communications Team

Dear Resident,

The purpose of this newsletter is to keep you up to date with the development of Cloncreen Wind Farm as it progresses into the construction stage of the development.

Bord na Móna's interest in developing Cloncreen Wind Farm is a result of the company's transition to becoming a major supplier of renewable energy. For the last eight decades Bord na Móna has underpinned Ireland's energy security by supplying peat for energy production. Ireland's urgent need to support positive climate action measures means the company is now managing its land in a very different way. As part of its Brown to Green Strategy, Bord na Móna is implementing an extensive peatland rehabilitation programme and expanding its low carbon operations as well as its Resource Recovery and recycling business. A key objective of this strategy involves using the land to continue to underpin Ireland's energy independence by developing green, sustainable energy sources to assist with Ireland's commitment- as part of the Climate Action Plan - to achieve 70% renewable electricity by 2030.

The Cloncreen Wind Farm project will contribute to both Ireland's and the European Union's renewable energy targets. It will also contribute to increasing the security of Ireland's energy supply and will facilitate a higher level of energy generation and self-sufficiency.

Bord na Móna plans to start construction of the wind farm in Summer 2020. As part of these works, a construction entrance will be made off the L1003. A traffic management plan will be implemented to ensure, as far as possible, that local people are not inconvenienced during the construction period.

Accompanying this letter, please find enclosed a consent form and freepost envelope for our voluntary text message notification system. The purpose of this system is to provide you with key project updates during the construction phase (such as any scheduled road works, delivery of turbine components, etc.). If you wish to avail of this service please complete the enclosed form and return to us via the freepost envelope provided.

Further newsletters will be circulated as the project progresses. In the meantime, if you have any queries in relation to the proposed project please contact our Community Liaison Officer Stephen on 087-3486624 or via email on cloncreenwindfarm@bnm.ie

Yours faithfully,

Cloncreen Wind Farm Communications Team



Cloncreen Project Newsletter

Project Overview

In 2017, An Bord Pleanála granted planning permission to Bord na Móna for the proposed Cloncreen Wind Farm. The proposed development consists of the construction of 21 turbines with a blade tip height of 170 metres on Cloncreen bog, in eastern Offaly.

The site of the proposed development is in the townlands of Cloncreen, Clongarret, Esker More, Rathvilla or Rathclonbrackan, Ballinrath, Ballynakill, Ballykilleen, Ballina and Ballinagar Co. Offaly. The site measures 3km north-south by 4km east-west covering a total of 960 hectares. The maximum proposed permanent footprint of the proposed development measures 40.1 hectares, which represents approximately 4 percent of the site. The proposed wind farm site is approximately 4.5 km south-west of Edenderry at its nearest point. The villages of Clonbullogue and Rhode are located approximately 2.0 km south-east and 7 km north-west of the site, respectively.

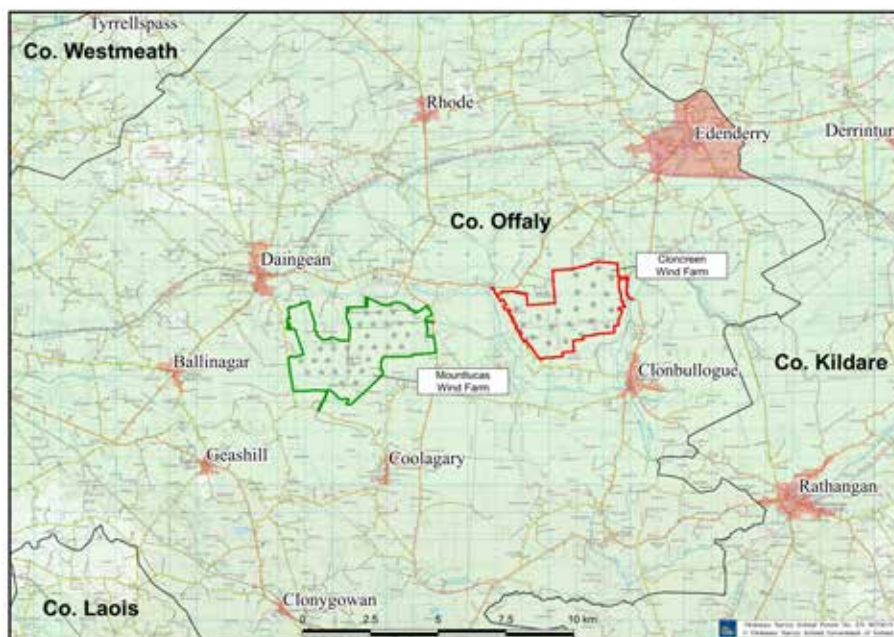


Figure 1: Site Location

The proposed development will represent a significant investment and will have a number of long-term and short-term benefits for the local economy. The project will create up to 120 jobs during the construction phase which is expected to last 18 to 24 months. On a long-term scale, the proposed development will create a small number of jobs during the operational phase relating to the maintenance and control of the wind farm.

The successful development of the wind farm will provide an enduring economic benefit to the communities surrounding the proposed project through the extensive amenity plans and linkage with other amenity facilities and tourist attractions in the region, the community benefit package for both residents and community groups, employment during the construction and operation of the development, the purchase of materials for the construction of the project and through the annual rates payable to the local authority.

Cloncreen Project Newsletter

Project Update

Tree Felling Works

In January, Bord na Móna commenced tree felling and vegetation clearance works as part of the development for the wind farm. The works took place within Cloncreen bog and adjacent to the L1003 (Cloncrane Road) between the R402 and the site construction entrance. The clearance works were carried out by specialist contractors supervised by Bord na Móna and were completed in late February. We would like to take this opportunity to thank the community for their co-operation during this period.

Construction Programme

The next phase of work on the project will involve upgrade works on the R402 Edenderry - Tullamore Road and the L1003 - Cloncrane Road. The works will facilitate construction traffic and the delivery of turbine components. Development works will also commence on the opening of the site construction entrance which will be located off the L1003 Cloncrane Road and works to develop the borrow pit on site. It is envisaged that this work will take place from June - August this year.

Procurement Process

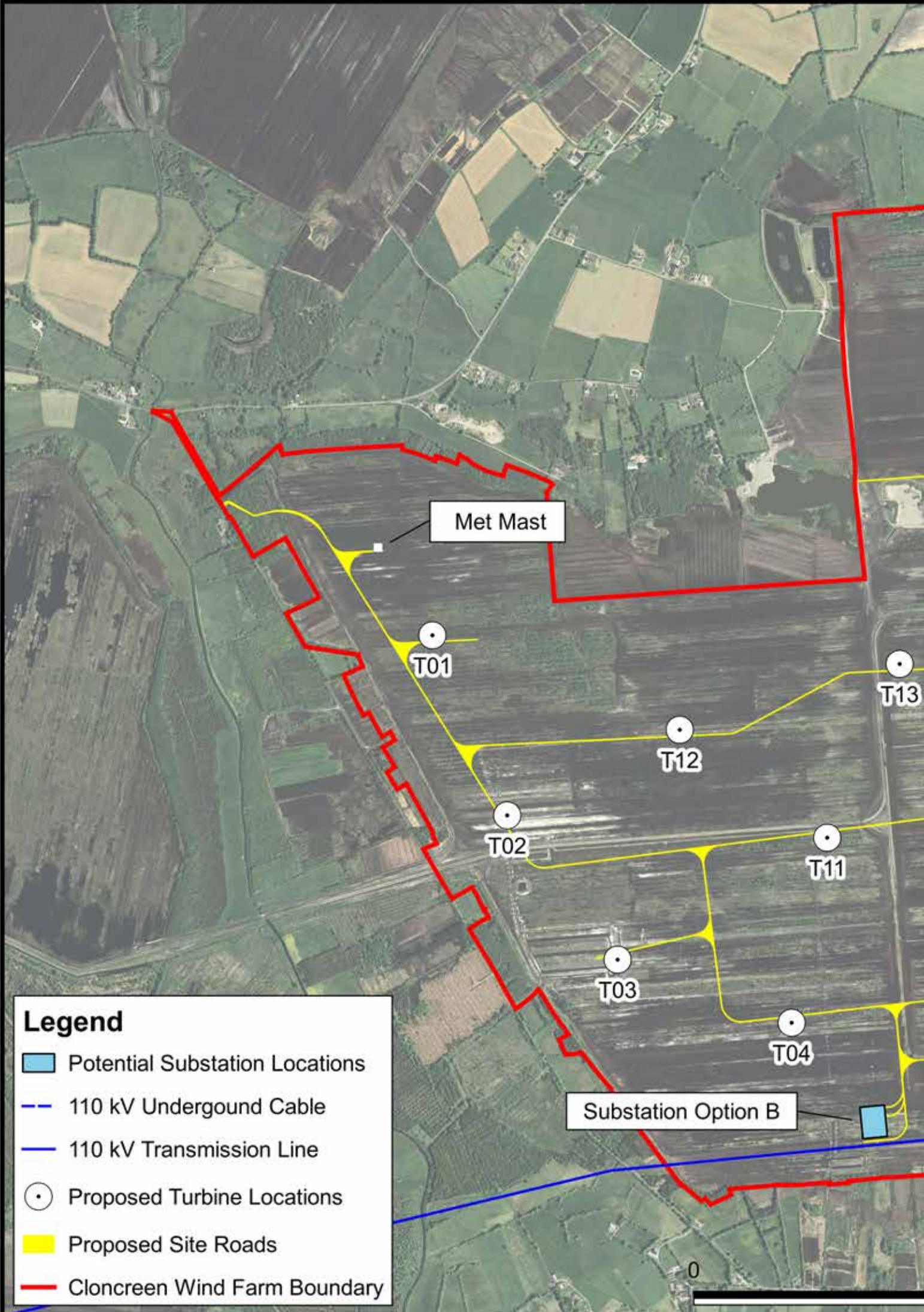
The tender competition for the three main wind farm contracts; Turbine Supply, Civil Balance of Plant (CBoP) and Electrical Balance of Plant (EBoP), are continuing to advance through the procurement process. It is anticipated that the CBoP and EBoP contracts will be awarded in the coming months.

Amenity Plan

Similar to Mountlucas Wind Farm, amenity facilities (such as utilising the road networks for walkways/cycleways) will be incorporated as part of the Cloncreen project. The Cloncreen Wind Farm Forum Amenity Group are continuing to progress the proposed amenity plan for the wind farm. A design consultant has been appointed to prepare an Interpretative Signage Plan for the wind farm.

Telecoms Mast

The existing mast in Cloncreen bog will be replaced by a new multi-user telecommunications mast to be utilised as part of the national broadband plan. The new mast will be located east of the fuel transport centre entrance to Edenderry Power Station.



Met Mast

T01

T13

T12

T02

T11

T03

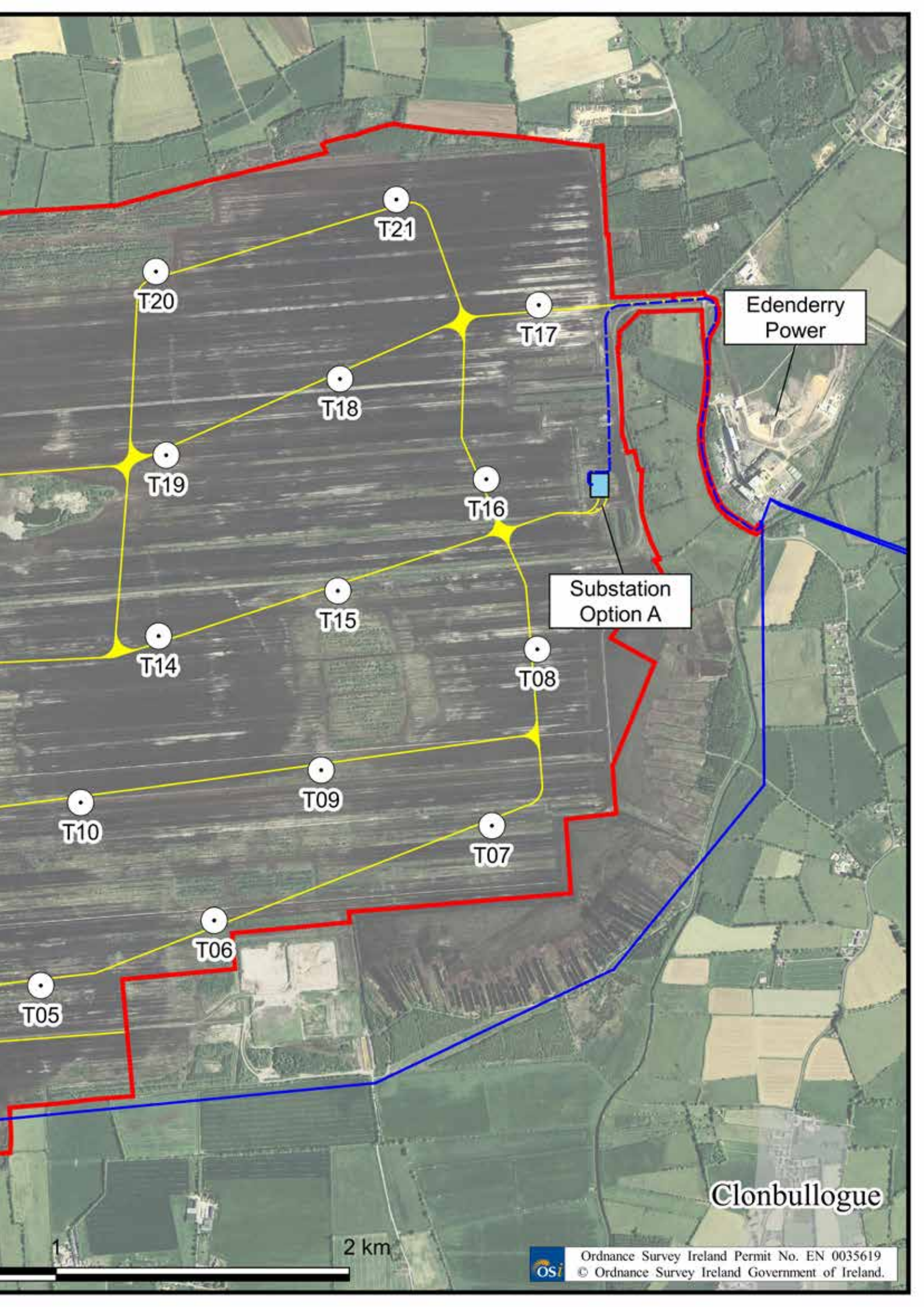
T04

Substation Option B

Legend

- Potential Substation Locations
- 110 kV Underground Cable
- 110 kV Transmission Line
- Proposed Turbine Locations
- Proposed Site Roads
- Cloncreen Wind Farm Boundary

0



Edenderry Power

Substation Option A

Clonbullogue

2 km

Cloncreen Project Newsletter

Meet the Buyer Event

We have postponed the “Meet the Buyer” event due to the public health restrictions in place due to COVID-19. We are aware that many community members are interested in meeting with the main contractors for the wind farm and we intend to organise the event when possible in line with public health advice and guidelines. In the meantime, should you wish to express an interest in working on the wind farm development, Bord na Móna is inviting you to send an expression of interest to: cloncreenwindfarm@bnm.ie.

Please state on your expression of interest which aspect of the wind farm development (civil, electrical, turbine supply) you are interested in working on. When the wind farm contractors are appointed your expression of interest will be forwarded to them for consideration. Please note that an expression of interest does not guarantee employment nor is it an offer of employment and has no legal effect. Bord na Móna is facilitating the transfer of expressions of interest only. It will be solely a matter for the wind farm contractors how they deal with and respond to any expression of interest.

For the purposes of data protection, please note that the only personal data that we hold will be the details you submit on your “Expression of Interest” (Name, address, email, contact number etc). Your details will be stored in a secure encrypted database on the Bord na Móna servers for a period of six months.

By sending this information to the project email you are consenting to Bord na Móna forwarding this information to the wind farm contractors. The wind farm contractors will be subject to relevant data protection legislation which includes the requirement to protect any personal data they hold for the purposes of providing the service.

Renewable Electricity Support Scheme (RESS)

On the 27th of February 2020, The Minister for Communications, Climate Action and Environment, Richard Bruton, published the Terms and Conditions for the first Renewable Electricity Support Scheme (RESS) auction. The Renewable Electricity Support Scheme (RESS) is an auction-based scheme which invites renewable electricity projects to bid for capacity and receive a guaranteed price for the electricity they generate. RESS replaces the existing Renewable Energy Feed-in Tariff (REFiT) scheme will significantly contribute to the introduction of sufficient renewable electricity generation to meet national and EU-wide renewable energy and decarbonisation targets out to 2030.

Cloncreen Wind Farm is expecting to participate in the first RESS auction in July. There are a number of pre-qualification stages the project must reach before it can become eligible to participate in the scheme – including planning consent and a grid connection offer. In early 2020, Cloncreen Wind Farm received a grid connection offer which along with the consent of planning enables the project to participate in the auction qualification process.

Cloncreen Project Newsletter

Mountlucas Wind Farm Update

Community Gain Scheme

The annual Mountlucas Wind Farm Community Gain Scheme Fund opened in February for applications for the 2020 Fund. The scheme is now in its seventh year of operation and provides an annual fund of €84,000 which is index linked. The fund is available to community and voluntary groups, not-for-profit groups or organisations with charitable status. This year, due to feedback received from community groups a new on-line system was launched as an option for completing the application in addition to the traditional paper based application form. Due to Covid-19 restrictions the Awards Committee conducted this year's awards meeting through virtual communication. A total of 28 projects received funding this year providing support for various community-based initiatives and improvement projects. To date, the fund has supported local schools, sports clubs, general amenity, social initiatives, as well as community facilities. To view previous recipients of the fund please visit: www.mountlucaswindfarm.ie/community-benefits

Near Neighbour Scheme

In 2017, Bord na Móna expanded its Community Benefit Package by introducing a Near Neighbour Scheme for Mountlucas Wind Farm. The Near Neighbour Scheme offers electricity bill payers living within a prescribed distance of a wind turbine an annual contribution towards their electricity bills subject to the Schemes Terms and Conditions.

In 2020 Bord na Móna launched the second phase of the Near Neighbour Scheme to residents within 1.7km of a turbine at Mountlucas Wind Farm. The scheme entitles residents who meet the Schemes eligibility criteria, to a once off contribution towards one of the following or a combination of all three: Energy Efficiency upgrade works, Education Support or towards an Electric Car. In order to participate in this phase, eligible homeowners were required to complete a Building Energy Rating (BER) Assessment on their property. This work is being carried by Evolved Energy Solutions who were appointed by Mountlucas Wind Farm to conduct the BER Assessments on homes that were eligible to participate in the Scheme. The cost of the individual assessments is being covered by the wind farm.

Santa raises €4,000 for Barnardo's Family Support Centre

Santa is a welcome visitor to Mountlucas Wind Farm each year since first arriving in 2017. The Santa Experience at Mountlucas Wind Farm raises €4,000 annually for a local charity. In 2019, funds raised from the event were donated to the Barnardo's Family Support Centre in Edenderry. Previous recipients of the fund include: St Vincent de Paul Daingean (2017) and The Irish Wheelchair Association Ballinagar (2018).

New website launched

Mountlucas Wind Farm has launched a new website to provide people with information on the wind farm, its amenity facilities and community benefit packages. To view the website please visit: www.mountlucaswindfarm.ie.

For more information on Mountlucas Wind Farm contact:

Catherine Swaine 087 1175756 or visit our website.



Cloncreen Project Newsletter

Independent Advice and Information

We encourage you to contact and seek advice and information from independent public bodies with an expertise in relation to renewable energy and in particular wind energy projects. The following contacts may be of benefit to you:

Sustainable Energy Authority of Ireland	Lo-call 1850 376 666	Info@seai.ie
Environmental Protection Agency	053-916 0600	info@epa.ie
Offaly County Council	057-9346800	webmaster@offalycoco.ie
Geological Survey of Ireland	LoCall 1890 449900	duty.geologist@gsi.ie
Inland Fisheries Ireland	01-8842600	info@fisheriesireland.ie
National Parks and Wildlife Services	1890 383 000	nature.conservation@ahg.gov.ie
Fáilte Ireland	1800 242473	CustomerSupport@failteireland.ie.
Irish Aviation Authority	01-671 8655	info@iaa.ie
Energy Institute UCD	01-716 1858	energy@ucd.ie

Contact Us

The proposed Cloncreen Wind Farm will benefit from participation by all interested parties during each stage of the development. If you wish to make a comment, would like to visit Mountlucas Wind Farm or require further information about the Cloncreen Wind Farm please use the contact details below:



Mobile: 087-3486624

Email: Cloncreenwindfarm@bnm.ie

Website: www.cloncreenwindfarm.ie

Address: Cloncreen Wind Farm Communications Team,
Bord na Móna Powergen
Newbridge,
Co. Kildare.

Overview of Bord na Móna Powergen Projects*

*correct as of time of print, June 8th.



Cloncreen Project Newsletter

Overview of Bord na Móna Powergen Projects*

**correct as of time of print, June 8th.*

1

Project Name: Oweninny Wind Farm Phase 1 (Joint Venture with ESB)

Location: County Mayo
Project Stage: Operational (2019)
Installed Capacity: 93 MW
No. Turbines: 29
Overall Blade Tip Height: 176 metres
website: www.oweninnywindfarm.ie

2

Project Name: Oweninny Wind Farm Phase 2 (Joint Venture with ESB)

Location: County Mayo
Project Stage: Pre-Construction
Proposed Maximum Export Capacity: 83MW
Proposed No. Turbines: 31
Proposed Overall Blade Tip Height: 176 metres
website: www.oweninnywindfarm.ie

3

Project Name: Cloncreen Wind Farm

Location: County Offaly
Project Stage: Construction
Proposed Maximum Export Capacity: 100MW
Proposed No. Turbines: 21
Proposed Overall Blade Tip Height: 170 metres
website: www.cloncreenwindfarm.ie

4

Project Name: Derryadd Wind Farm

Location: County Longford
Project Stage: Planning
Proposed Maximum Export Capacity: 96 MW
Proposed No. Turbines: 24
Proposed Overall Blade Tip Height: 185 metres
website: www.derryaddwindfarm.ie

5

Project Name: Derrinlough Wind Farm

Location: County Offaly
Project Stage: Planning
Proposed Maximum Export Capacity: 85 MW
Proposed No. Turbines: 21
Proposed Overall Blade Tip Height: 185 metres
website: www.derrinloughwindfarm.ie

6

Project Name: Ballivor Wind Farm

Location: Counties Meath and Westmeath
Project Stage: Pre - Planning
website: www.ballivorwindfarm.ie
** At this stage, the scale of the proposed development has not been determined.*

7

Project Name: Timahoe North Solar Farm (Co-Development Agreement with ESB)

Location: County Kildare
Project Stage: Planning
Proposed Installed Generating Capacity: 70 MW

8

Project Name: Cuil na Móna Renewable Gas Facility

Location: County Laois
Project Stage: Planning

9

Project Name: Bruckana Wind Farm

Location: Counties Tipperary/Laois/Kilkenny
Project Stage: Operational (2014)
Installed Capacity: 42 MW
No. Turbines: 14
Overall Blade Tip Height: 150 metres
website: www.bruckanawindfarm.ie

10

Project Name: Mountlucas Wind Farm

Location: County Offaly
Project Stage: Operational (2014)
Installed Capacity: 84 MW
No. Turbines: 28
Overall Blade Tip Height: 150 metres
website: www.mountlucaswindfarm.ie

11

Project Name: Sliabh Bawn Wind Farm (Joint Venture with Coillte and Greencoat Renewables)

Location: County Roscommon
Project Stage: Operational (2017)
Installed Capacity: 64 MW
No. Turbines: 20
Overall Blade Tip Height: 130 metres
website: www.sliabhawnwindfarm.ie

12

Project Name: Bellacorick Wind Farm

Location: County Mayo
Project Stage: Operational (1992)
Installed Capacity: 6.45 MW
No. Turbines: 21

13

Project Name: Oweninny Wind Farm Phase 3

Location: County Mayo
Project Stage: Pre - Planning
website: www.oweninnywindfarmphasethree.ie
**At this stage, the scale of the proposed development has not been determined*

